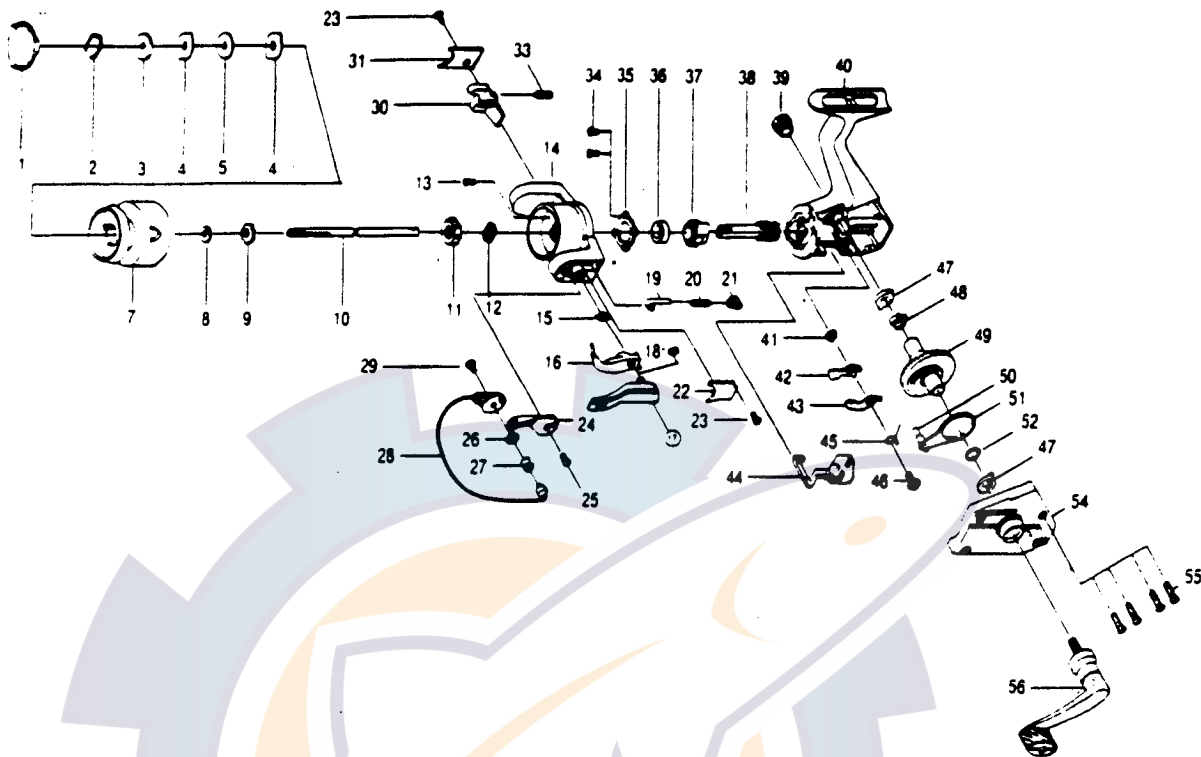


QUANTUM SS2



KEY PART NO. NO.	DESCRIPTION	PRICE	KEY PART NO. NO.	DESCRIPTION	PRICE
1 KQ332	DRAG KNOB ASSY.	2.35	29 KQ044	BAIL HOLDER SCREW	.65
2 KQ038	DRAG RETAINER	3.25	30 KQ019	KICK LEVER	.65
3 KQ033	SPOOL WASHER 'A'	.50	31 KQ024	KICK LEVER COVER	.65
4 KQ029	SPOOL WASHER 'B'	.65	33 KQ049	KICK LEVER SPRING	.40
5 KQ050	SPOOL WASHER 'C'	.50	34 KQ080	BEARING PLATE SCREW	.65
7 KQ021	SPOOL	4.75	35 KQ040	BEARING PLATE	.65
8 KQ030	SPOOL ADJ. WASHER	.35	36 KQ028	BALL BEARING	7.00
9 KQ037	SPOOL CLICK CLAM	.50	37 KQ060	RATCHET GEAR	1.65
10 KQ015	MAIN SHAFT	1.65	38 KQ011	PINION GEAR	2.05
11 KQ006	ROTOR NUT	.90	39 KQ073	HANDLE SCREW CAP	.55
12 KQ065	ROTOR RETAINER WASHER	.65	40 KQ001	BODY	3.35
13 KQ094	ROTOR NUT LOCK SCREW	.50	41 KQ091	STOPPER BUSHING	.65
14 KQ009	ROTOR	2.30	42 KQ064	STOPPER 'A'	.55
15 KQ096	TRIP LINK SPRING	.60	43 KQ063	STOPPER 'B'	.55
16 KQ097	TRIP LINK	1.55	44 KQ059	STOPPER LEVER	.65
17 KQ115	TRIP LEVER	1.15	45 KQ061	STOPPER LEVER SPRING	.65
18 KQ034	E-CLIP	.65	46 KQ083	STOPPER SCREW	.65
19 KQ031	SPRING SHAFT	.50	47 KQ013	BODY/BODY COVER BUSHING	.55
20 KQ022	BAIL SPRING	.50	48 KQ086	SLIDING SPRING	.50
21 KQ020	SPRING HOLDER	.45	49 KQ012	DRIVE GEAR	2.15
22 KQ087	BAIL SPRING COVER	.65	50 KQ081	O/S SLIDER PIN	.55
23 KQ085	ROTOR COVER SCREW	.65	51 KQ025	ROTOR COVER SCREW	.90
24 KQ007	ARM LEVER	.95	52 KQ026	DRIVE GEAR ADJ. WASHER	.65
25 KQ051	ARM LEVER SCREW	.65	54 KQ023	BODY COVER	2.55
26 KQ017	BAIL COLLAR	.90	55 KQ057	BODY COVER SCREW	1.15
27 KQ004	LINE ROLLER	1.15	56 KQ318	HANDLE ASSY.	6.10
28 KQ347	BAIL ASSY.	3.05			

Prices subject to change without notice. Prices do not include postage and handling.

PLEASE ORDER BY PART NUMBER

Rev. 11/90

Zebco Division Brunswick Corporation, Box 270, Tulsa, OK 74101 USA 918-836-5681

